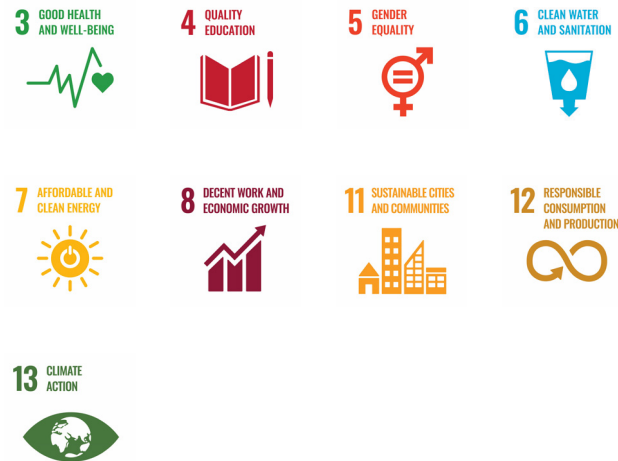


SUSTAINABLE DEVELOPMENT GOALS

We are committed to the United Nations Sustainable Development Goals (SDGs). We focus our efforts on the most relevant SDG, where we can deliver greater impact with our business and activity.

Most relevant SDGs



HIGHLIGHT EXAMPLES OF THE POSITIVE CONTRIBUTION THAT WE MAKE UNDER EACH OF THE MOST RELEVANT SDGS



3 GOOD HEALTH AND WELL-BEING

Promote more sustainable lifestyles among visitors and contribute to higher levels of employee resilience and productivity through improved health and wellbeing.



4 QUALITY EDUCATION

Promote sustainability events with local communities. Continually support the professional development of our employees through a well-established education and training programme providing an array of different development opportunities.



5 GENDER EQUALITY

Continually seek to promote gender equality and diversity within the company and defined annual targets and long-term objectives to increase the percentage of women in leadership positions.



6 CLEAN WATER AND SANITATION

Increase the water efficiency of our assets, use innovation and technology to rethink how water is used and managed in our owned assets; minimise water pollution through our Safety, Health and Environmental Development Standards (SHEDS) when needed by the asset owner; monitor wastewater discharges at our owned certified assets.



7 AFFORDABLE AND CLEAN ENERGY

Increase the energy efficiency of our assets and implement measures to increase our energy self-sufficiency to reduce our reliance on fossil fuels.



8 DECENT WORK AND ECONOMIC GROWTH

Support local economic development through job creation and skills development opportunities.

Promote innovation and productivity in our company through improved work practices and operational efficiencies and employee engagement and training.



11 SUSTAINABLE CITIES AND COMMUNITIES

Design eco-efficient, attractive real estate assets that reduce resource consumption, serve the needs of the local population and enhance public spaces, local amenities and infrastructure.

Work with town councils to implement systems that enable the efficient use of resources.



12 RESPONSIBLE CONSUMPTION AND PRODUCTION

Improve the eco-efficiency of our assets focusing on energy, water and waste production and prohibit the use of materials which are known to have negative impacts on the environment and on the health and wellbeing of building occupants.



13 CLIMATE ACTION

Reduce GHG emissions, integrate climate change risk adaptation procedures into our current risk management processes, design standards for new developments and operational procedures for existing assets.